



CITYWORKS® CONSULTING

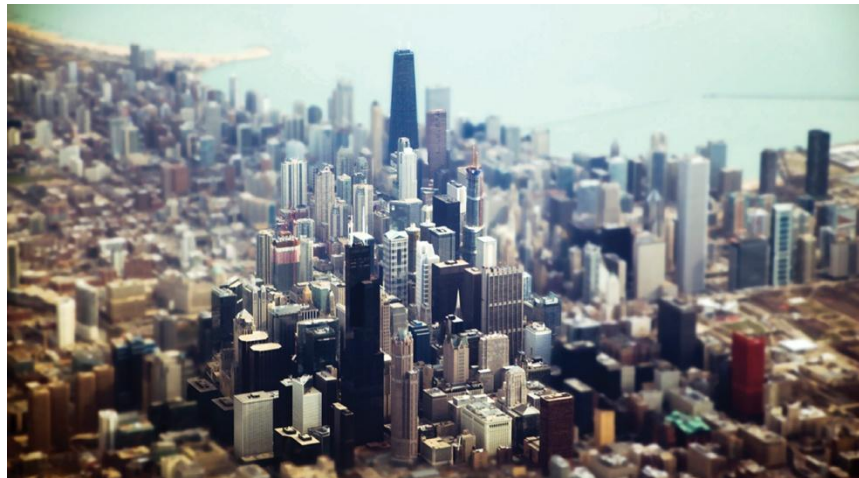
Geospatial and Asset Management Solutions

THE POWER ADVANTAGE

- > Platinum-level business partner
- > Close working relationship with Azteca Systems since 1996
- > All phases of implementation
- > 115 Cityworks Implementations for enterprise asset and work management in multiple markets

SERVICES

- > Implementation Planning
- > Business Process Analysis
- > Project Initiation / Management
- > Configuration
- > Migration Services
- > System Integration
- > Custom Development
- > Server, Mobile, Cloud Deployments
- > Training and Support



The complete Cityworks

POWER provides a complete suite of services for the full line of Cityworks products: Field Mode, Cloud Deployment, Server AMS, PLL, Desktop, Anywhere, Designer, APIs, Web Services, Storeroom & CCTVInterface.

Our Cityworks team averages 15 years of industry experience supporting Cityworks implementations:

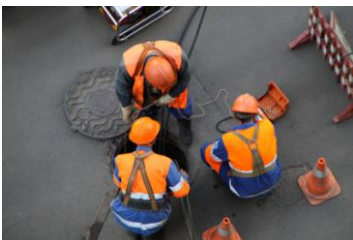
- Local Government
- Electric & Gas
- Water Distribution
- Sanitary Sewer Collection
- Storm Water
- Treatment Plants
- Vegetation Management
- Building, Facility & Fleet
- Permits/Licenses/Code Enforcement
- Streets, Lighting, Signs, & Parks

Planning & Analytics

POWER's consultants help you transform your business requirements into successful asset management solutions – from developing Cityworks online service request systems to the implementation of Cityworks for utility asset management and analytics.

The enterprise platform

With our experience to guide the implementation process, you can achieve a truly effective Enterprise Asset Management (EAM) solution with Cityworks and ArcGIS as the platform foundation. Through hands-on workshops and detailed documents, we configure Cityworks to match your requirements.



Cityworks asset inventories ranging from trees and street repairs to water mains and buildings are directly managed in the geodatabase.



CITYWORKS CONSULTING

Geospatial and Asset Management



POWER is bringing tools for asset management into the hands of Cityworks users in local government, energy companies, and utilities.

RELATED SERVICES

- > Strategic Consulting Services
- > Implementation / Integration Services
- > Geospatial Data Services

INTEGRATIONS

- > Customer Information and Billing
- > Enterprise Resource Planning
- > Inventory Management
- > Financial Systems
- > Field Applications
- > Document Management
- > SCADA
- > Citizen Engagement
- > Engineering Design Tools
- > Automated Vehicle Location
- > Outage Management
- > MS Outlook
- > Fuel Management
- > Location / One Call Systems
- > Custom Productivity Add-ons



Integrating Cityworks

Integrating enterprise systems and providing asset information across the organization is essential to EAM. Our integration approaches include web services, Cityworks APIs, message buses, and database level components. Customer information, utility billing, ERP, SCADA, fuel systems, document management and engineering design are among the external systems most commonly interfaced to Cityworks.

We help plan the integration strategy, develop integration tools, and test the integrated Cityworks solution.

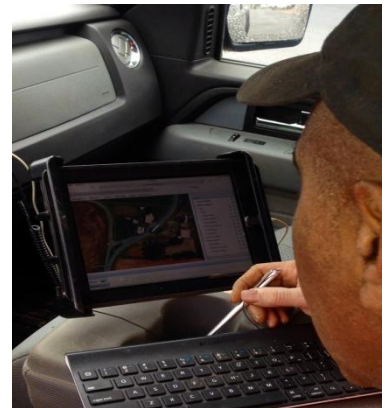
Migrating to Cityworks

Our migration services help you move from legacy systems into Cityworks – migrating work orders, service requests, and other data sources into one asset repository.

You can also rely on POWER to keep your Cityworks system up-to-date with the latest releases. From field mode to Cloud-based, Cityworks continues to evolve with advances in technology.

Though Cityworks is built for ease of use, we involve users early in the configuration process and deployment decisions and support them with customized training.

With the acceptance of new technologies and methodologies in both data entry and work management processes, users are experiencing greater efficiencies and are fully leveraging the virtues of the Cityworks GIS-centric asset management platform.



POWER provides customized training for field crews using Cityworks Field Mode with ArcGIS Online to perform updates on iPads.